



# GMT MONTHLY MEMBERSHIP PROGRESS REPORT

Results as of: 6/30/2019

Multiple District 14

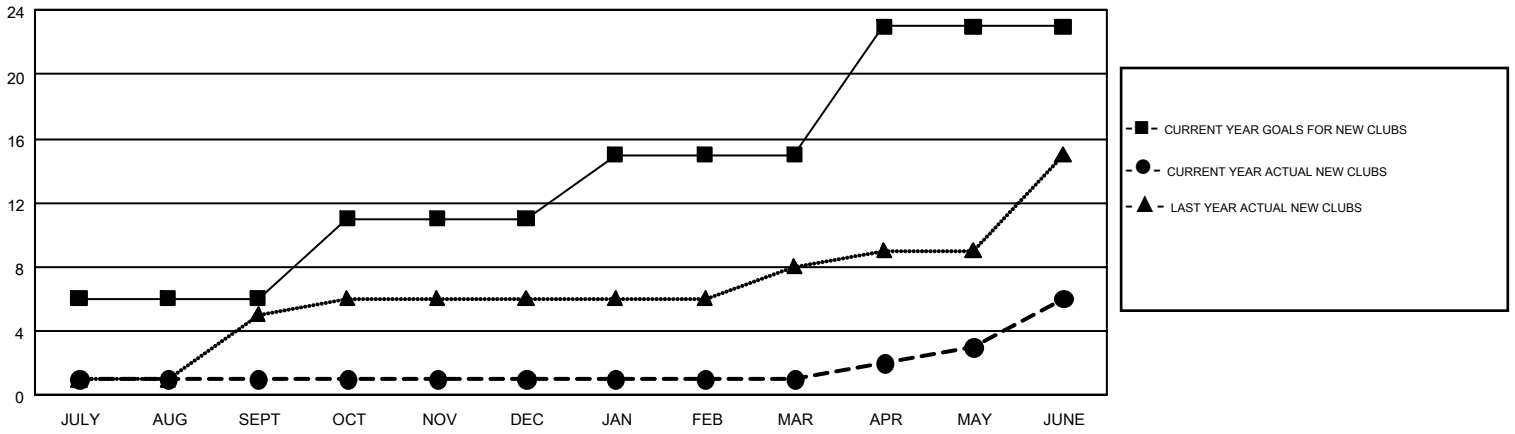
LOCATION: PENNSYLVANIA

GMT: CINDY GREGG

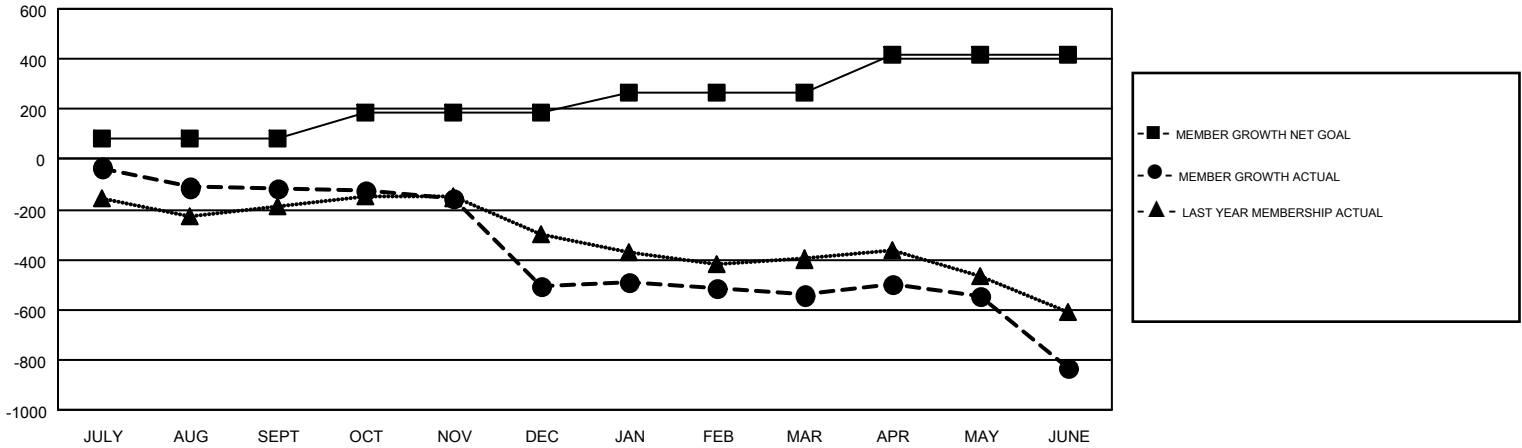
GMT CA 1

Clubs				Members			
RESULTS FOR 2018-2019				RESULTS FOR 2018-2019			
QUARTER	NEW CLUB GOAL	NEW CLUBS	DROPPED CLUBS	QUARTER	MEMBER GROWTH NET GOAL	MEMBER GROWTH ACTUAL	DROPPED MEMBERS ACTUAL (including transfers)
JULY/AUG/SEPT	6	1	8	JULY/AUG/SEPT	84	285	360
OCT/NOV/DEC	5	0	6	OCT/NOV/DEC	100	343	706
JAN/FEB/MAR	4	0	6	JAN/FEB/MAR	82	370	353
APR/MAY/JUNE	8	5	8	APR/MAY/JUNE	151	539	782

GOALS AND ACTUAL NEW CLUBS CUMULATIVE



GOALS AND ACTUAL MEMBERS CUMULATIVE



DROPPED CLUBS: 28	408 CLUBS OF 703 ADDED 1 OR MORE NEW MEMBERS	<u>GENDER DISTRIBUTION</u>	
<u>DROPPED MEMBERS</u>		MALE	13,266 (73.29%)
DECEASED	337	FEMALE	4,835 (26.71%)
CLUB CANCELLED	212	TOTAL FAMILY UNIT MEMBERS 3,382	
OTHER	1,652		
TOTAL	2,201	FAMILY MEMBERS PAYING HALF DUES 1,745	
<a href="#">CLICK HERE FOR CUMULATIVE MEMBERSHIP DATA</a>			